

Conservation

Fun Outdoors!

Bees have been getting a lot of buzz lately. You can help these important pollinators by creating a bee watering hole. Use the flat ceramic tray from a flowerpot. Place it in a protected place near growing flowers where bees will likely visit. Scatter colorful marbles and glass beads across the bottom of the tray, then add water but leave the tops of the beads or marbles above the water level. Check back later to see if any bees are getting a drink!

Hunting Tip

Will you be pursuing a tom turkey this spring? Be prepared by scouting your chosen hunting area. Arrive early and listen for gobblers to sound off from their overnight roosts before they fly down for the day. Pattern their movement as they travel to feed. A location between roost and feeding area is usually a good spot to hunt. Oklahoma's youth spring turkey season is April 13-14, 2024.

Fishing Tip

Want to try catching some channel catfish? They aren't picky feeders. While stink baits and punch baits work well, some "experts" claim that hot dogs soaked in cherry drink mix and garlic powder are the best thing going. Since channel cats use smell to find food, these "dogs" will surely get the cats' attention.

for Kids!

Word Search: Let's Go Fishing!

H	F	G	O	O	B	A	V	I	K	R	T	Z	P	X	P
M	H	Q	X	A	C	C	M	Y	O	P	D	E	A	Y	V
M	T	G	U	K	K	O	O	H	G	K	B	U	L	F	D
D	K	Y	F	X	M	C	S	R	U	E	V	T	W	S	N
E	K	I	E	S	B	E	S	Z	K	B	R	E	K	V	L
A	F	C	X	N	Z	S	X	X	A	O	F	N	E	F	C
E	E	E	P	C	M	W	Z	I	D	V	M	J	N	I	U
P	A	C	C	M	N	B	T	G	Z	U	R	S	Z	L	U
V	C	H	W	S	A	B	R	E	K	A	L	T	Q	L	Q
Z	B	E	X	R	U	R	V	V	K	Z	C	R	X	E	A
J	K	S	T	C	F	P	T	A	Y	P	W	I	S	T	H
A	U	T	K	B	S	P	S	A	V	X	C	N	R	K	J
M	G	E	W	O	J	L	V	H	O	H	E	G	N	N	Q
J	T	L	V	F	S	E	Q	Q	P	B	J	E	X	I	B
Y	H	T	J	M	R	E	B	B	O	B	F	R	Q	F	J
M	R	T	E	S	J	R	P	P	W	M	B	H	A	E	M

Find and circle these things you might see when you go on a fishing trip.

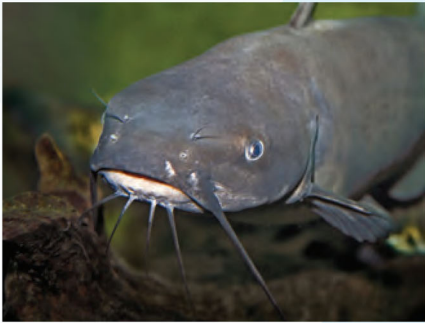
Bait Bucket
Fillet Knife
Lake
Reel

Boat Ramp
Hook
Moss
Rod

Bobber
Ice Chest
Net
Stringer

COOL FACTS About Channel Catfish:

- Oklahoma's record channel catfish weighed 35 pounds 15 ounces, caught in 2005 by Gary Doak Jr. at Taft Lake.
- Statewide daily limit is 15 channel or blue catfish combined, with no size limit for channel cats.
- They are common statewide in streams, ponds, and reservoirs.
- They have a forked tailfin as does blue catfish, while flathead catfish have a rounded tailfin.
- When taken from clean waters, they make excellent table fare.
- Catfish feed more by taste and touch than by sight.
- They are omnivorous, feeding on a wide variety of organic matter, dead and alive.
- Some of the more common foods are fish, mussels, snails, insects, and crayfish.



Color a Critter: Channel Catfish

